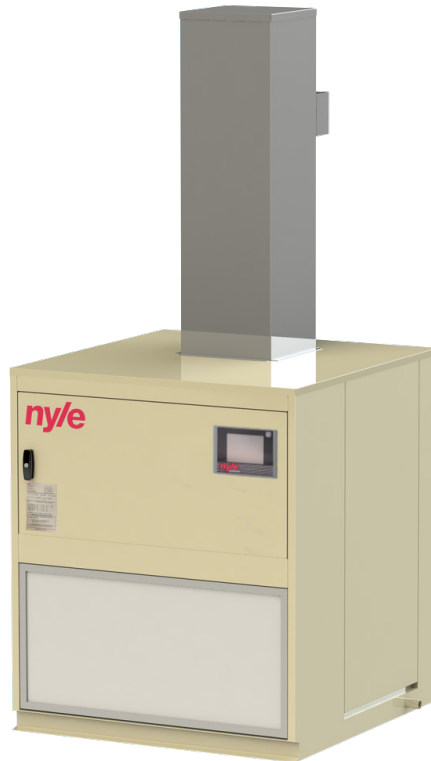




## 20AA Commercial Heat Pump



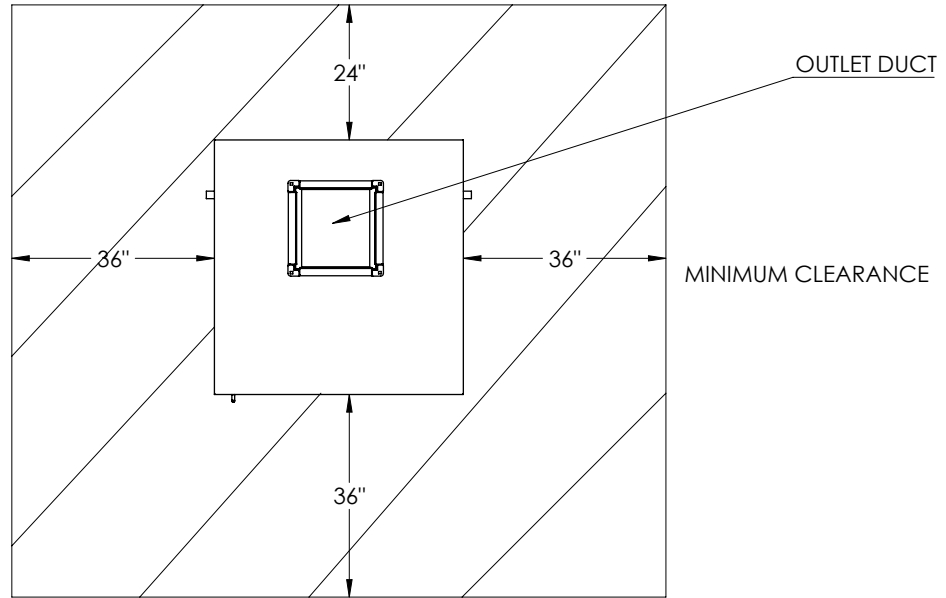
### Introduction

Nyle Thermal 20AA an Air to Air source heat pump, capable of averaging 20 kilowatts of heating capacity

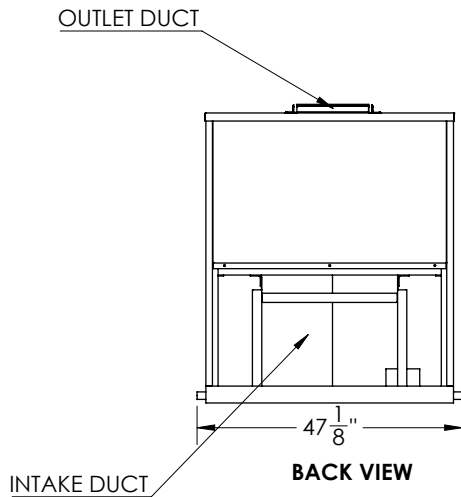
### Standard Features

- Build America Buy America compliant
- Monobloc design for easy installation
- High efficiency, air-source heat pump
- Industry leading factory support and order lead times
- Capable of sustaining air temperatures up to 160°F (71°C)

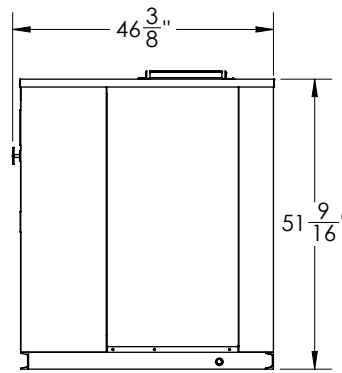
# Dimensions



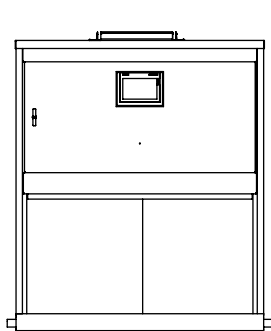
**TOP VIEW**



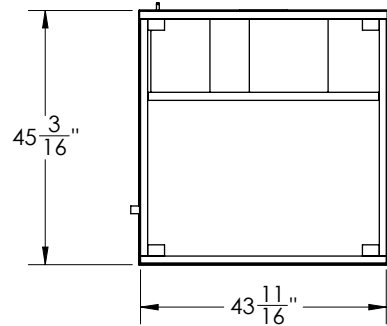
**BACK VIEW**



**SIDE VIEW**



**FRONT VIEW**



**BOTTOM VIEW**

<b>Unit Specifications</b>	<b>Data</b>
<b>Ambient Operating Temps (F / C)</b>	85°F (29°C) to 160°F (71°C)
<b>Electrical Requirements (V)</b>	480/3/60
<b>MCA / MOCP (Amperage) blower/compressor</b>	MCA:16A
	MOCP: 20A
<b>Minimum Inlet (Source) Temp</b>	85°F (29°C)
<b>Maximum Inlet (Source) Temp</b>	160°F (71°C)
<b>Minimum Outlet (Sink) Temp</b>	85°F (29°C)
<b>Maximum Outlet (Sink) Temp</b>	185°F (85°C)
<b>C.O.P.</b>	2.5
<b>Duct Connection Sizes</b>	Outlet: 14"X 14"
	Inlet: 40"X 21"
<b>Footprint Dims (LxWxH)</b>	43 1 <sup>1</sup> / <sub>16</sub> " X 45 3 <sup>3</sup> / <sub>16</sub> " X 51 9 <sup>9</sup> / <sub>16</sub> "
<b>Weight (lbs)</b>	800 lbs
<b>Maximum Heating Capacity (BTUh / kW)</b>	60 kBTUh / 20 kW
<b>Refrigerant</b>	R513a



## 50AA Commercial Heat Pump



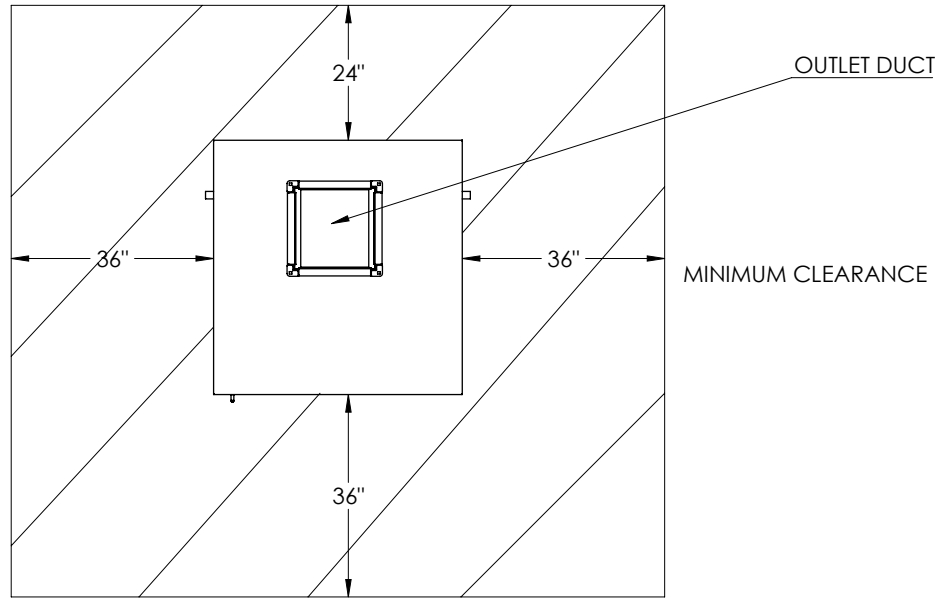
### Introduction

Nyle Thermal 50AA an Air to Air source heat pump, capable of averaging 50 kilowatts of heating capacity

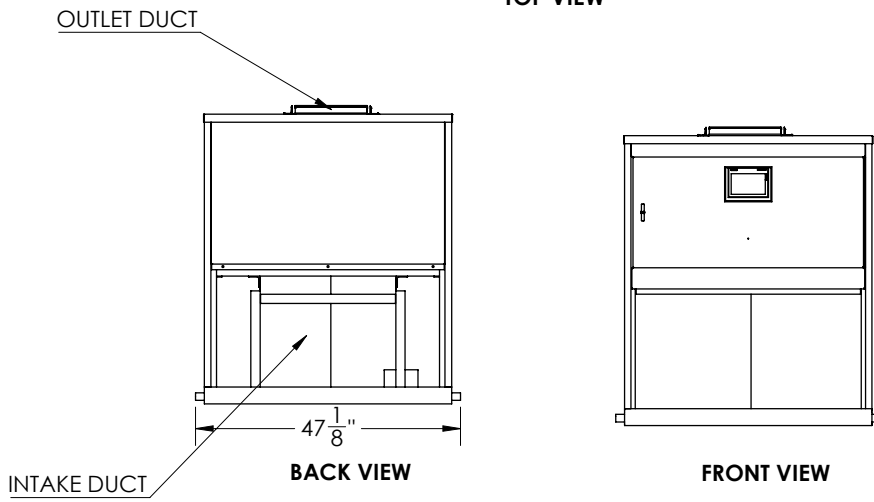
### Standard Features

- Build America Buy America compliant
- Monobloc design for easy installation
- High efficiency, air-source heat pump
- Industry leading factory support and order lead times
- Capable of sustaining air temperatures up to 160°F (71°C)

# Dimensions

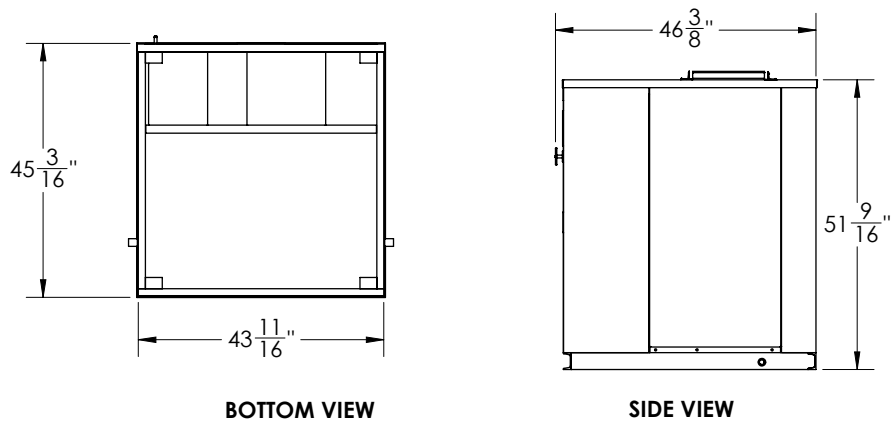


**TOP VIEW**



**BACK VIEW**

**FRONT VIEW**



**BOTTOM VIEW**

**SIDE VIEW**

<b>Unit Specifications</b>	<b>Data</b>
Ambient Operating Temps (F / C)	85°F (29°C) to 160°F (71°C)
Electrical Requirements (V)	480/3/60
MCA / MOCP (Amperage) blower/compressor	MCA: 37A
	MOCP: 40A
Minimum Inlet (Source) Temp	85°F (29°C)
Maximum Inlet (Source) Temp	160°F (71°C)
Minimum Outlet (Sink) Temp	85°F (29°C)
Maximum Outlet (Sink) Temp	185°F (85°C)
C.O.P.	3.0
Duct Connection Sizes	Outlet: 20" X 20"
	Inlet: 58 ½" X 19 ½"
Footprint Dims (LxWxH)	43 1/16" X 45 3/16" X 51 9/16"
Weight (lbs)	2000
Maximum Heating Capacity (BTUh / kW)	180 kBTUh / 50 kW
Refrigerant	R513a



## 90AA Commercial Heat Pump



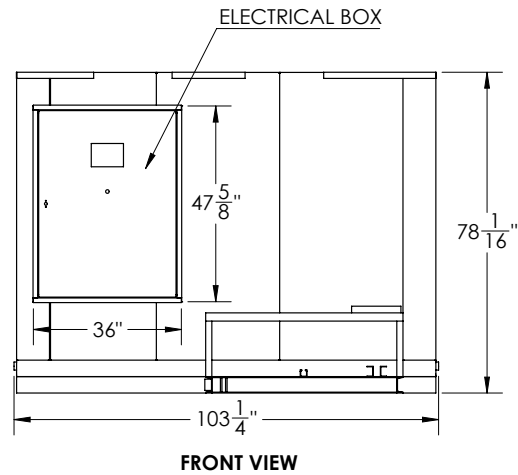
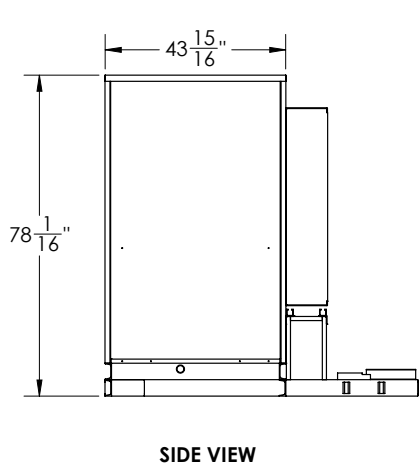
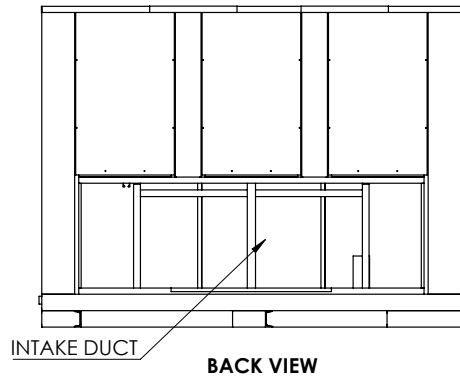
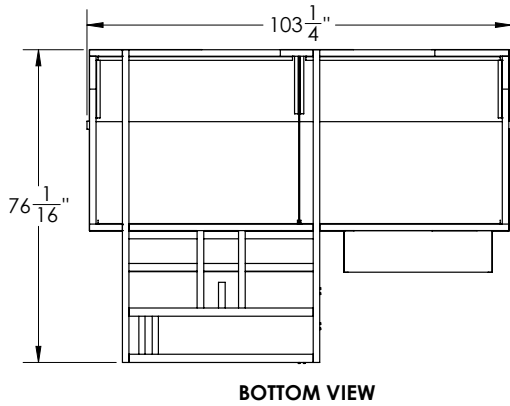
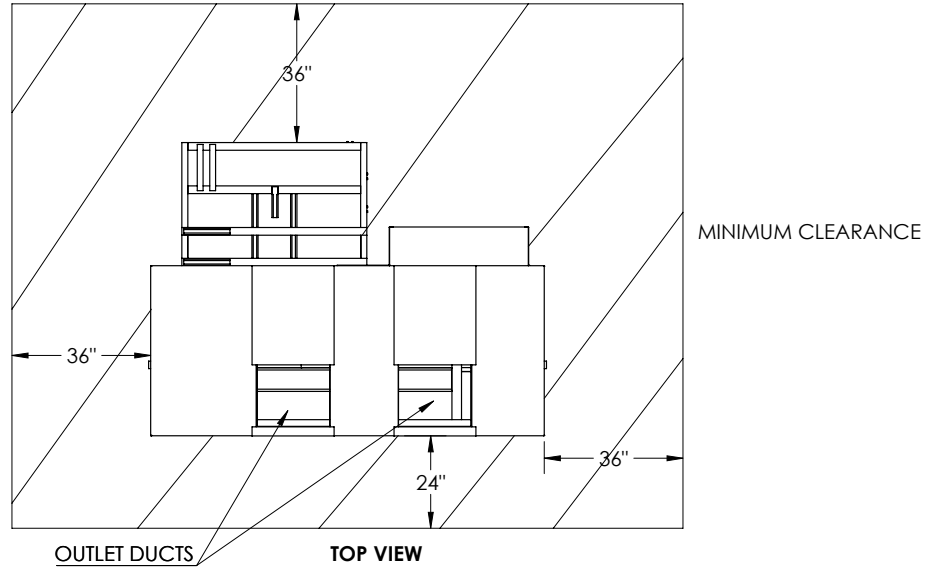
### Introduction

Nyle Thermal 90AA an Air to Air source heat pump, capable of averaging 90 kilowatts of heating capacity

### Standard Features

- Build America Buy America compliant
- Monobloc design for easy installation
- High efficiency, air-source heat pump
- Industry leading factory support and order lead times
- Capable of sustaining air temperatures up to 160°F (71°C)

# Dimensions





<b>Unit Specifications</b>	<b>Data</b>
Ambient Operating Temps (F / C)	85°F (29°C) to 160°F (71°C)
Electrical Requirements (V)	480/3/60
MCA / MOCP (Amperage) blower/compressor	MCA: 68A
	MOCP: 70A
Minimum Inlet (Source) Temp	85°F (29°C)
Maximum Inlet (Source) Temp	160°F (71°C)
Minimum Outlet (Sink) Temp	85°F (29°C)
Maximum Outlet (Sink) Temp	185°F (85°C)
C.O.P.	3.0
Duct Connection Sizes	Outlet: (2x) 22.5" X 22.5"
	Inlet: (1x) 84.5" X 26.5"
Footprint Dims (LxWxH)	103 ¼" X 76 ⅛" X 78 ⅛"
Weight (lbs)	3,000 lbs
Maximum Heating Capacity (BTUh / kW)	360 kBTUh / 90kW
Refrigerant	R513a



## 140AA Commercial Heat Pump



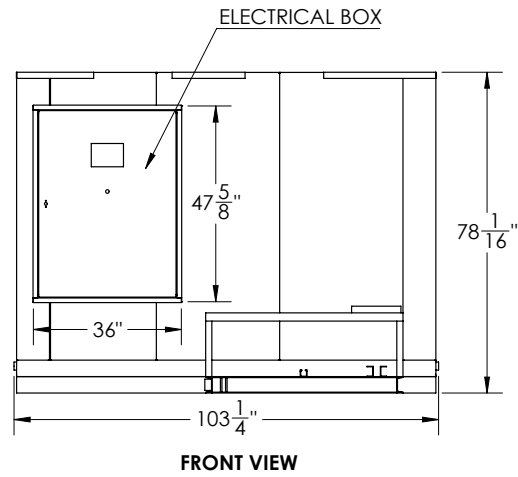
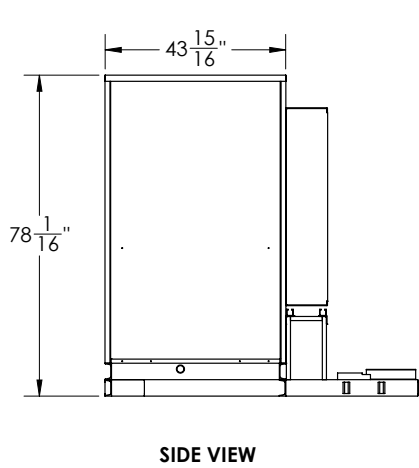
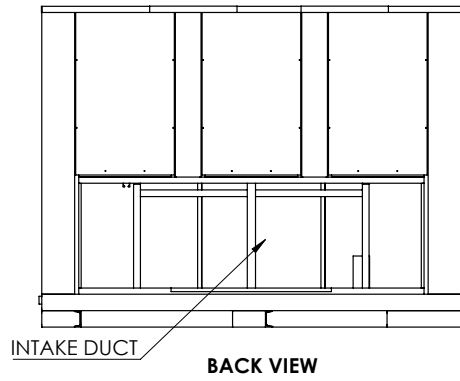
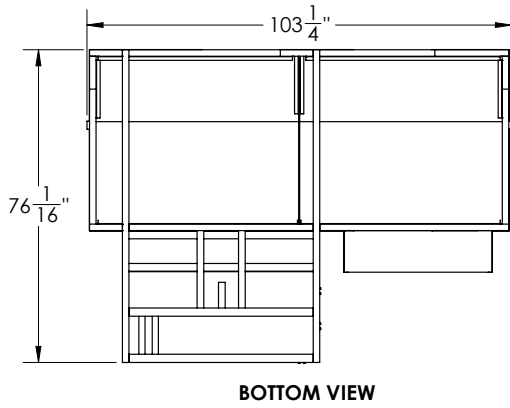
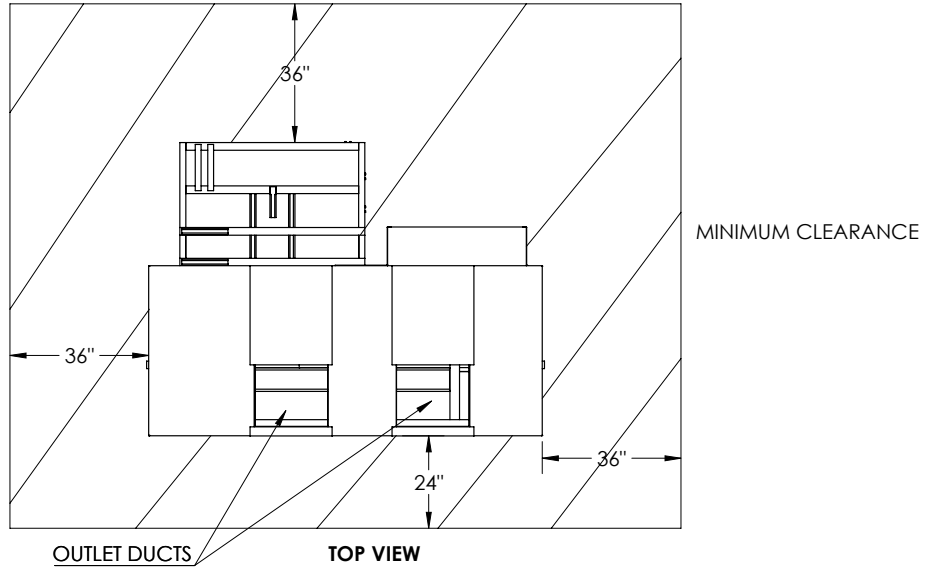
### Introduction

Nyle Thermal 140AA an Air to Air source heat pump, capable of averaging 140 kilowatts of heating capacity

### Standard Features

- Build America Buy America compliant
- Monobloc design for easy installation
- High efficiency, air-source heat pump
- Industry leading factory support and order lead times
- Capable of sustaining air temperatures up to 160°F (71°C)

# Dimensions



<b>Unit Specifications</b>	<b>Data</b>
<b>Ambient Operating Temps (F / C)</b>	85°F (29°C) to 160°F (71°C)
<b>Electrical Requirements (V)</b>	480/3/60
<b>MCA / MOCP (Amperage) blower/compressor</b>	MCA: 110A
	MOCP: 125A
<b>Minimum Inlet (Source) Temp</b>	85°F (29°C)
<b>Maximum Inlet (Source) Temp</b>	160°F (71°C)
<b>Minimum Outlet (Sink) Temp</b>	85°F (29°C)
<b>Maximum Outlet (Sink) Temp</b>	185°F (85°C)
<b>C.O.P.</b>	3.0
<b>Duct Connection Sizes</b>	Outlet: (2x) 22.5" X 22.5"
	Inlet: (1x) 112" X 27"
<b>Footprint Dims (LxWxH)</b>	131 ¼" X 44 ¼" X 72 ⅝"
<b>Weight (lbs)</b>	3,000 lbs
<b>Maximum Heating Capacity (BTUh / kW)</b>	480 kBTUh / 140 kW
<b>Refrigerant</b>	R513a



## 280AA Commercial Heat Pump



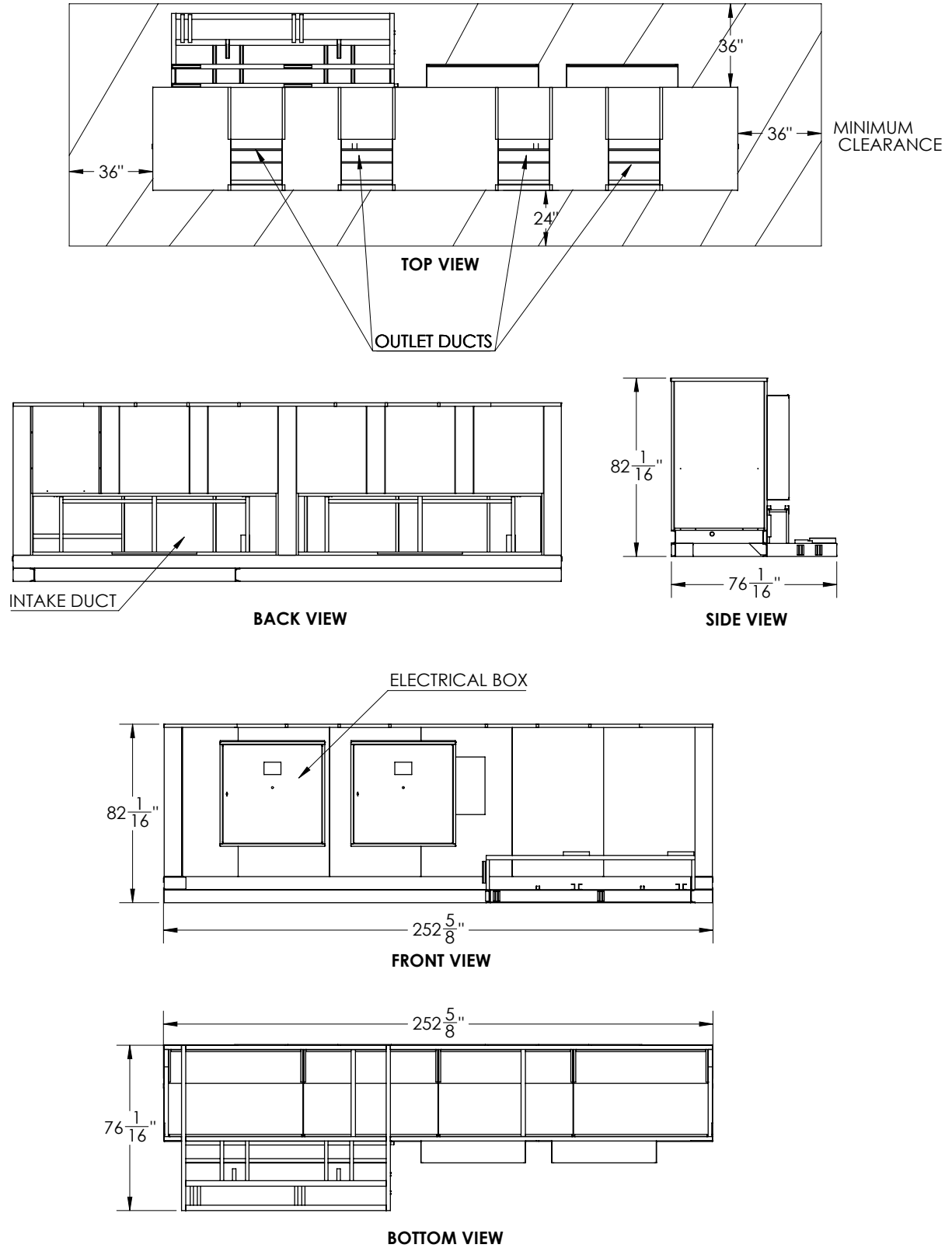
### Introduction

Nyle Thermal 280AA an Air to Air source heat pump, capable of averaging 280 kilowatts of heating capacity

### Standard Features

- Build America Buy America compliant
- Monobloc design for easy installation
- High efficiency, air-source heat pump
- Industry leading factory support and order lead times
- Capable of sustaining air temperatures up to 160°F (71°C)

# Dimensions



<b>Unit Specifications</b>	<b>Data</b>
Ambient Operating Temps (F / C)	85°F (29°C) to 160°F (71°C)
Electrical Requirements (V)	480/3/60
MCA / MOCP (Amperage) blower/compressor	MCA: 220A
	MOCP: 225A
Minimum Inlet (Source) Temp	85°F (29°C)
Maximum Inlet (Source) Temp	160°F (71°C)
Minimum Outlet (Sink) Temp	85°F (29°C)
Maximum Outlet (Sink) Temp	185°F (85°C)
C.O.P.	3.0
Duct Connection Sizes	Outlet: (4x) 22.5" X 22.5"
	Inlet: (2x) 112" X 27"
Footprint Dims (LxWxH)	252 5/8" X 76 1/16" X 82 1/16"
Weight (lbs)	6,000 lbs
Maximum Heating Capacity (BTUh / kW)	960 kBTUh / 280 kW
Refrigerant	R513a



## 420AA Commercial Heat Pump



### Introduction

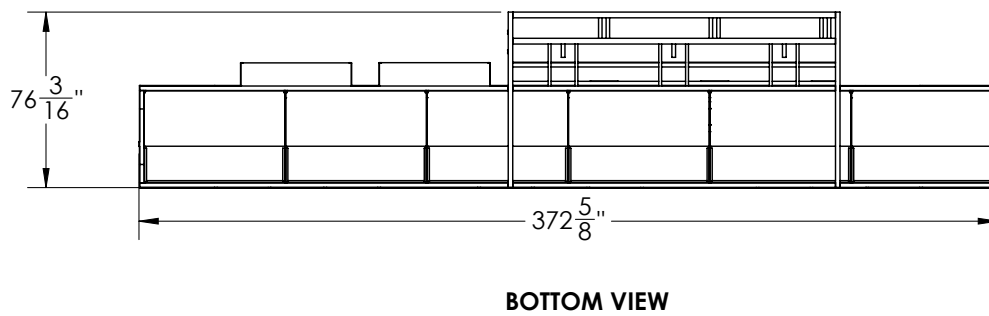
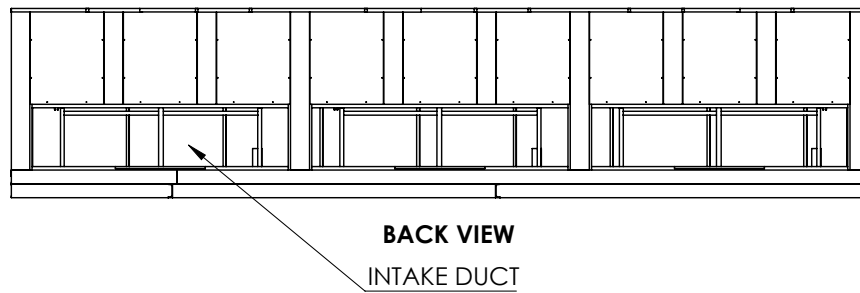
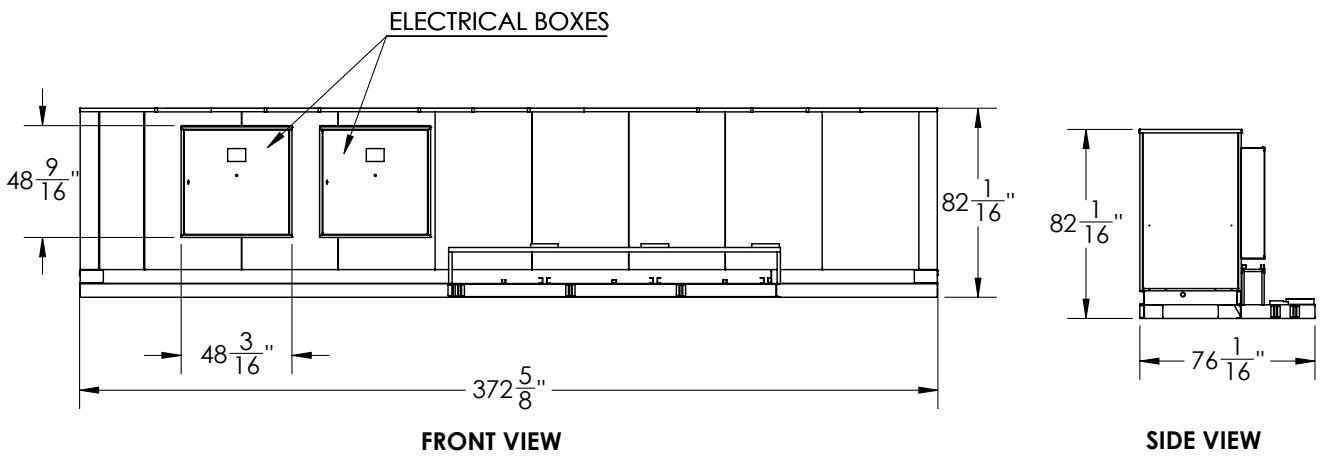
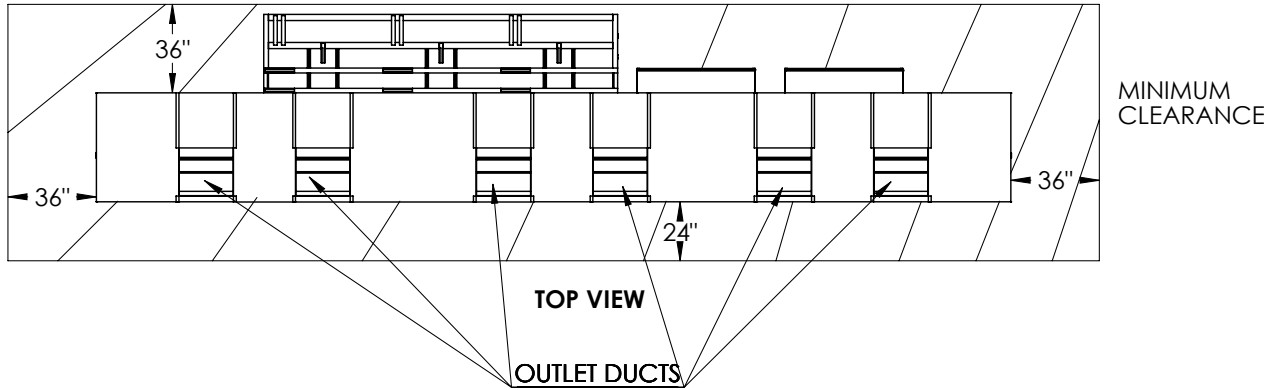
Nyle Thermal 420AA an Air to Air source heat pump, capable of averaging 420 kilowatts of heating capacity

### Standard Features

- Build America Buy America compliant
- Monobloc design for easy installation
- High efficiency, air-source heat pump
- Industry leading factory support and order lead times
- Capable of sustaining air temperatures up to 160°F (71°C)



# Dimensions



<b>Unit Specifications</b>	<b>Data</b>
Ambient Operating Temps (F / C)	85°F (29°C) to 160°F (71°C)
Electrical Requirements (V)	480/3/60
MCA / MOCP (Amperage) blower/compressor	MCA: 330A
	MOCP: 350A
Minimum Inlet (Source) Temp	85°F (29°C)
Maximum Inlet (Source) Temp	160°F (71°C)
Minimum Outlet (Sink) Temp	85°F (29°C)
Maximum Outlet (Sink) Temp	185°F (85°C)
C.O.P.	3.0
Duct Connection Sizes	Outlet: (6x) 22.5" X 22.5"
	Inlet: (3x) 112" X 27"
Footprint Dims (LxWxH)	372 5/8" X 76 3/16" X 82 1/16"
Weight (lbs)	9,000lbs
Maximum Heating Capacity (BTUh / kW)	1.44MM BTUh / 420 kW
Refrigerant	R513a