



## 140AA Commercial Heat Pump



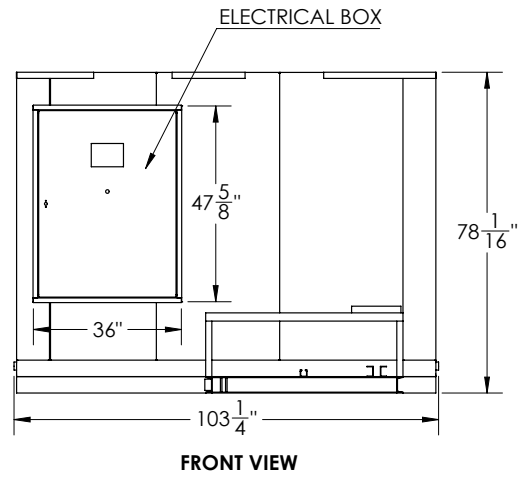
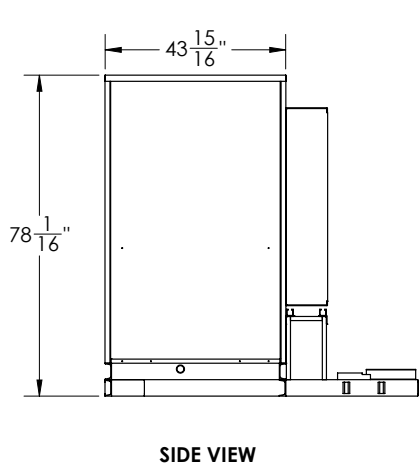
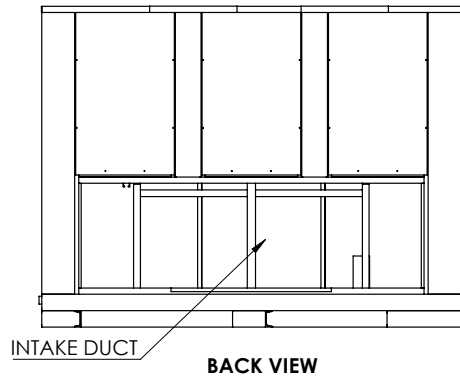
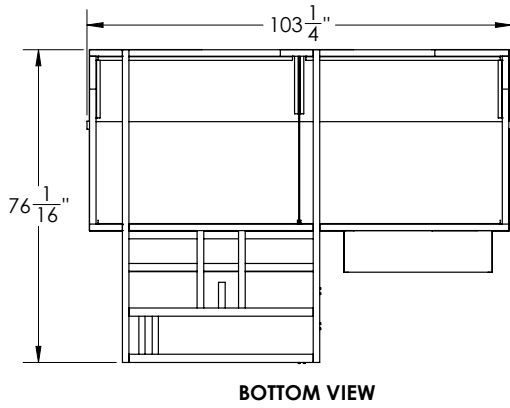
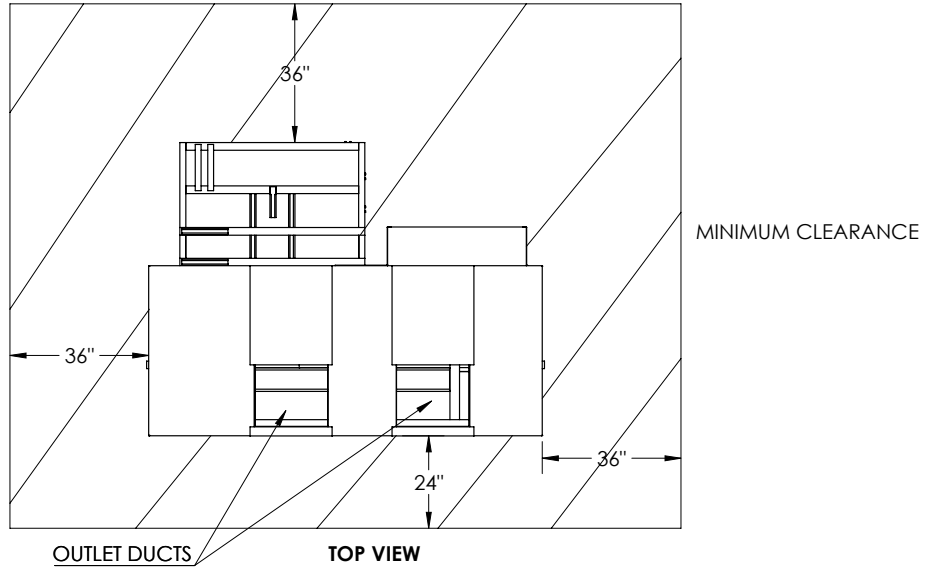
### Introduction

Nyle Thermal 140AA an Air to Air source heat pump, capable of averaging 140 kilowatts of heating capacity

### Standard Features

- Build America Buy America compliant
- Monobloc design for easy installation
- High efficiency, air-source heat pump
- Industry leading factory support and order lead times
- Capable of sustaining air temperatures up to 160°F (71°C)

# Dimensions



<b>Unit Specifications</b>	<b>Data</b>
<b>Ambient Operating Temps (F / C)</b>	85°F (29°C) to 160°F (71°C)
<b>Electrical Requirements (V)</b>	480/3/60
<b>MCA / MOCP (Amperage) blower/compressor</b>	MCA: 110A
	MOCP: 125A
<b>Minimum Inlet (Source) Temp</b>	85°F (29°C)
<b>Maximum Inlet (Source) Temp</b>	160°F (71°C)
<b>Minimum Outlet (Sink) Temp</b>	85°F (29°C)
<b>Maximum Outlet (Sink) Temp</b>	185°F (85°C)
<b>C.O.P.</b>	3.0
<b>Duct Connection Sizes</b>	Outlet: (2x) 22.5" X 22.5"
	Inlet: (1x) 112" X 27"
<b>Footprint Dims (LxWxH)</b>	131 ¼" X 44 ¼" X 72 ⅝"
<b>Weight (lbs)</b>	3,000 lbs
<b>Maximum Heating Capacity (BTUh / kW)</b>	480 kBTUh / 140 kW
<b>Refrigerant</b>	R513a