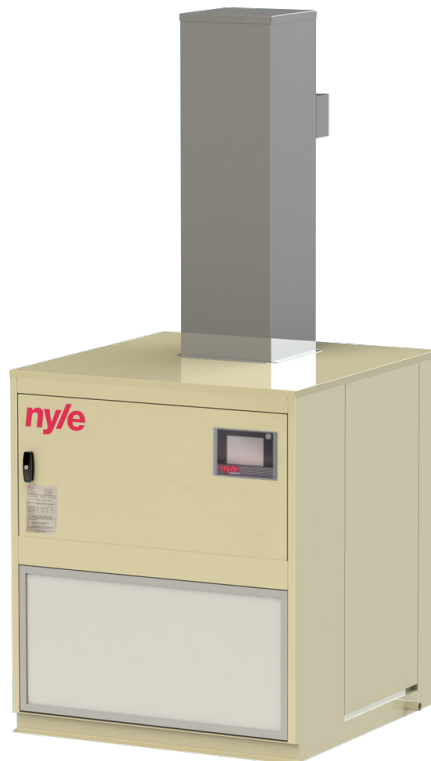




20AA Commercial Heat Pump



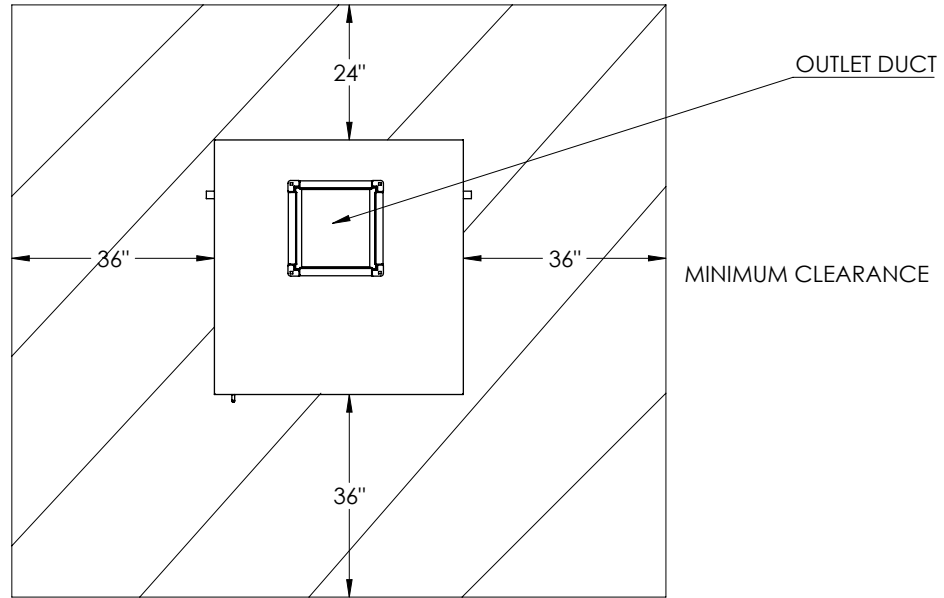
Introduction

Nyle Thermal 20AA an Air to Air source heat pump, capable of averaging 20 kilowatts of heating capacity

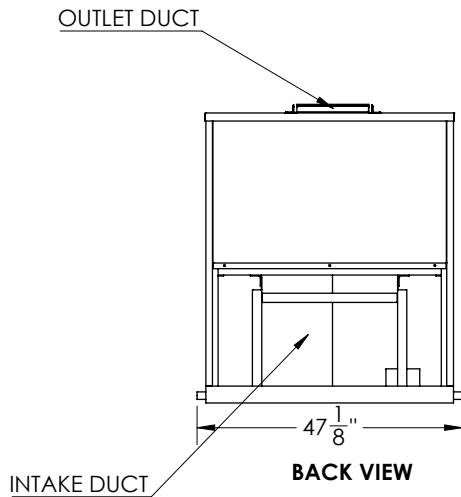
Standard Features

- Build America Buy America compliant
- Monobloc design for easy installation
- High efficiency, air-source heat pump
- Industry leading factory support and order lead times
- Capable of sustaining air temperatures up to 160°F (71°C)

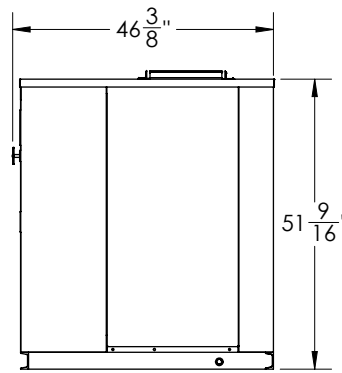
Dimensions



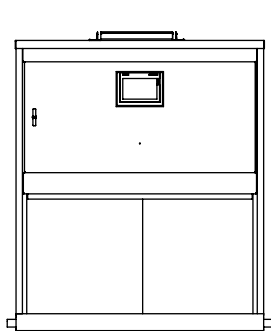
TOP VIEW



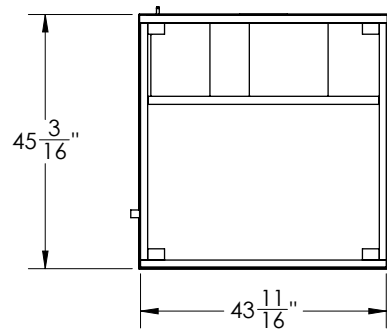
BACK VIEW



SIDE VIEW



FRONT VIEW



BOTTOM VIEW

Unit Specifications	Data
Ambient Operating Temps (F / C)	85°F (29°C) to 160°F (71°C)
Electrical Requirements (V)	480/3/60
MCA / MOCP (Amperage) blower/compressor	MCA:16A
	MOCP: 20A
Minimum Inlet (Source) Temp	85°F (29°C)
Maximum Inlet (Source) Temp	160°F (71°C)
Minimum Outlet (Sink) Temp	85°F (29°C)
Maximum Outlet (Sink) Temp	185°F (85°C)
C.O.P.	2.5
Duct Connection Sizes	Outlet: 14"X 14"
	Inlet: 40"X 21"
Footprint Dims (LxWxH)	43 1 ¹ / ₁₆ " X 45 3 ³ / ₁₆ " X 51 9 ⁹ / ₁₆ "
Weight (lbs)	800 lbs
Maximum Heating Capacity (BTUh / kW)	60 kBTUh / 20 kW
Refrigerant	R513a